

BUY THE BLOCK

GREENLINING FOR RACIAL AND ECONOMIC EQUITY

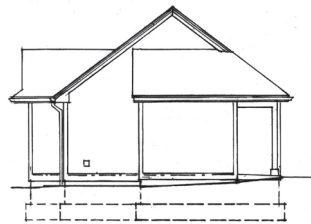
ERASING BARRIERS • HOUSING FIRST



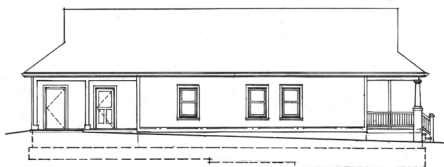
THE CLIFFORD



FRONT VIEW



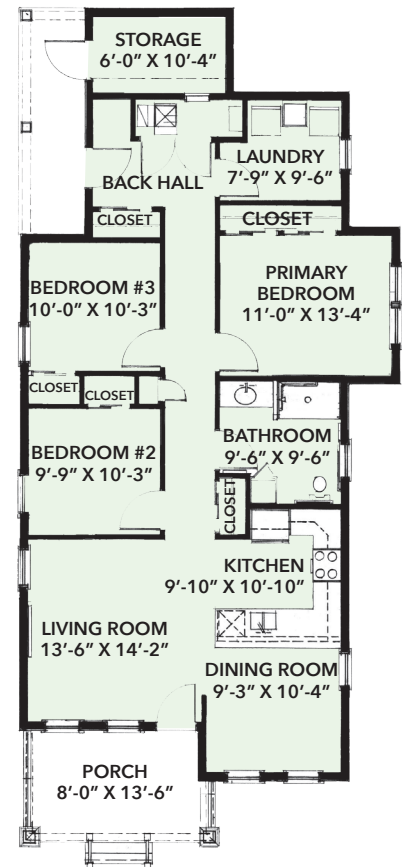
BACK VIEW



LEFT SIDE VIEW



RIGHT SIDE VIEW



Ranch • 1365 sq. ft. • fully handicap accessible • 3 bedroom • 1 bath • \$103,000

The Clifford is a fully handicap-accessible, three-bedroom ranch that is ideal for a family with members who require special supports. The Clifford has an open floor plan with interconnected living areas that offer a spacious feel. It is built on a concrete slab with no basement and is complimented with an open front porch.

Additional Special Features: • Full package of Energy Star appliances: refrigerator, stove, range, dishwasher, washer and dryer • Electric heat pump heating and cooling systems (central air) • Walk-in or roll in shower • Built-in electric stove • Spacious heated storage area in the rear of the house • Rear visitable entrance with 1:20 low profile sidewalk from the house to the driveway • Full-size laundry hook-up for washer and dryer • Detached garage

This house is an Energy Star Certified Home – Version 3.1; HERS Index 50

FOR MORE INFORMATION, VISIT: cityofrochester.gov/buytheblock